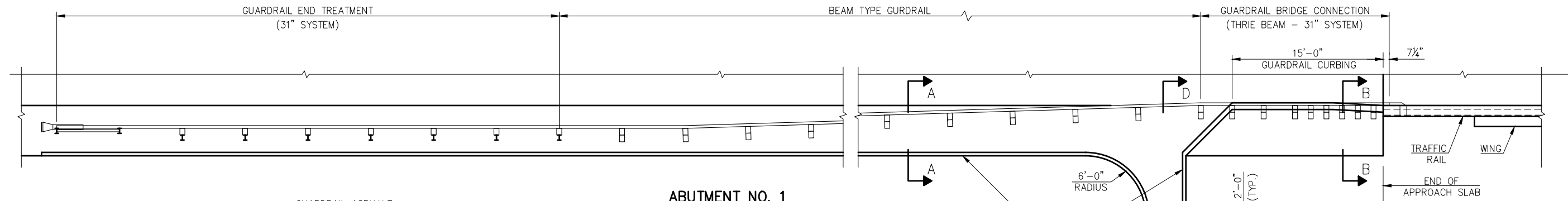
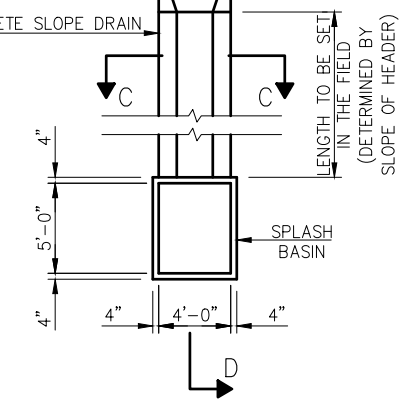
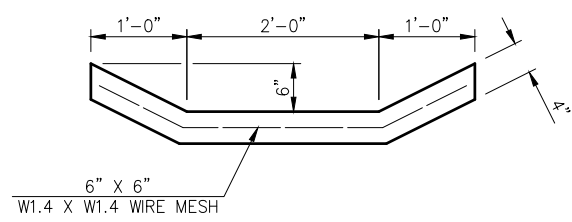
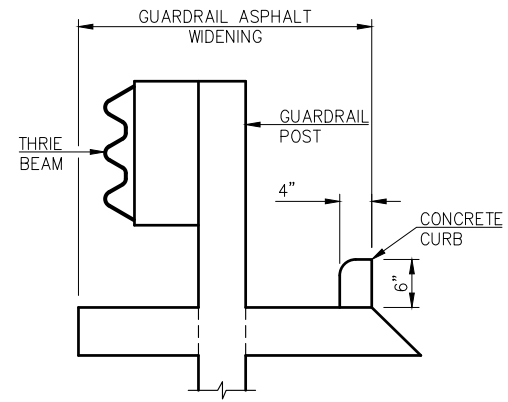
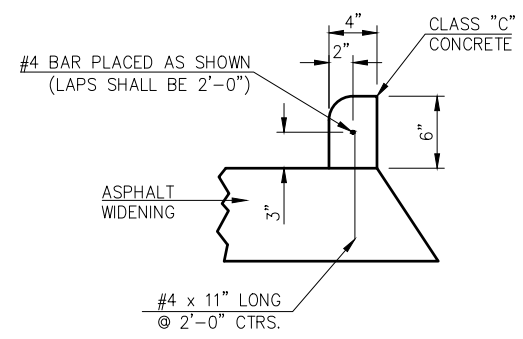


REVISIONS		
REV. NO.	DESCRIPTION	DATE



ABUTMENT NO. 1
SOUTH END OF BRIDGE - BOTH SIDES OF ROADWAY



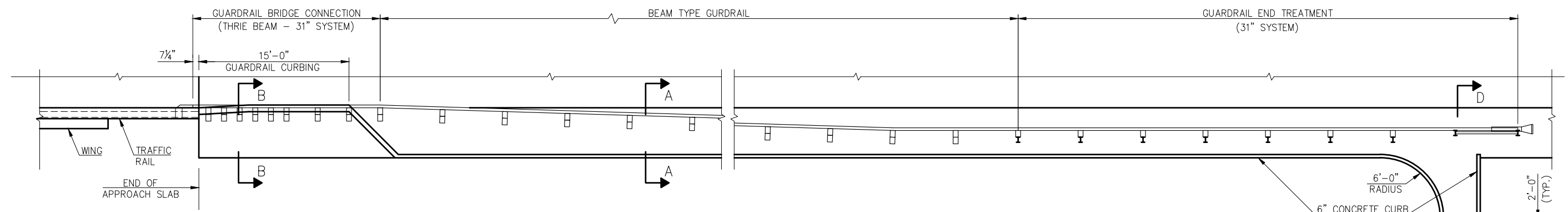
NOTE: ASPHALT WIDENING SHALL BE IN ACCORDANCE WITH STANDARDS THRI-1, AND GHW1-1 EXCEPT AS SHOWN ON THIS SHEET. ALL COSTS OF ASPHALT WIDENING SHALL BE INCLUDED IN ROADWAY PAY ITEMS.

SLOPE DRAINS, SPLASH BASINS AND CONCRETE CURBS SHALL BE CONSTRUCTED USING CLASS "C" CONCRETE AS SHOWN ON THIS SHEET. ALL COSTS OF THE SLOPE DRAINS, SPLASH BASINS AND CONCRETE CURBS, INCLUDING CONCRETE, REINFORCING STEEL AND WIRE MESH SHALL BE INCLUDED IN THE PAY ITEMS FOR "CLASS "C" CONCRETE".

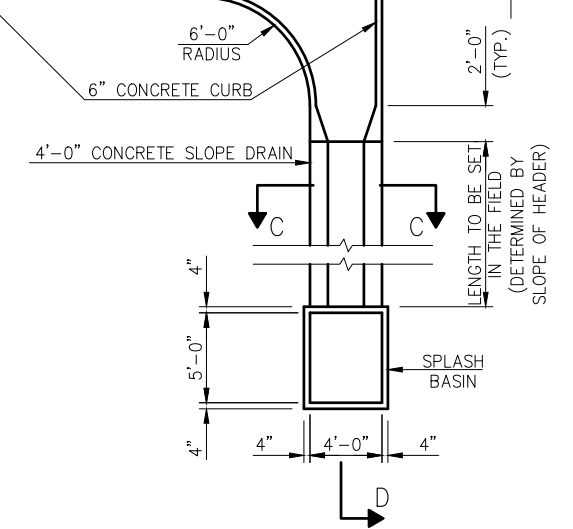
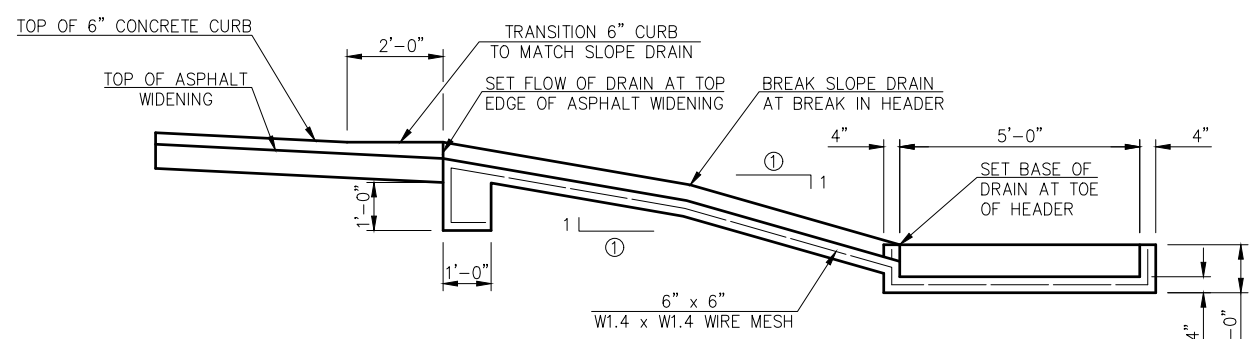
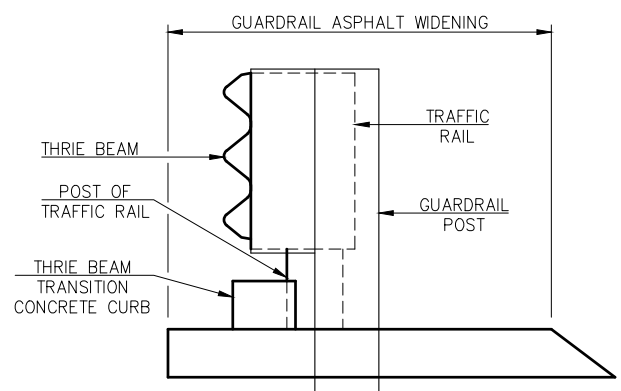
DETAIL OF CONCRETE CURB

SECTION A-A

SECTION C-C



ABUTMENT NO. 2
NORTH END OF BRIDGE - BOTH SIDES OF ROADWAY



SECTION B-B

SECTION D-D
① SLOPE TO MATCH SLOPE OF HEADER

DESIGN	SLP	5/14	SH-28 OVER SALT CREEK	NOWATA COUNTY
DETAIL	SLP	5/14	BRIDGE "A"	
CHECK	MBS	3/15		
GUY ENGINEERING SERVICES, INC.			STATE JOB PIECE NO. 28857(04)	SHEET NO. B030

DETAILS OF DRAINS AT ENDS OF BRIDGE

Monday, July 31, 2017 4:20:25 PM V:\12-716E SH-28 Salt Creek JP 28857\STRUCTURAL\DWG\Salt Creek - DRAINS.dwg